

**TECHNICAL MANUAL**

**GENERAL SUPPORT MAINTNANCE  
REPAIR PARTS AND SPECIAL TOOLS LIST  
FOR  
TEST SET, RADIO DATA LINK SOUND RANGING  
TS-3566/GRA-114  
(NSN 5895-01-064-9740)**

---

**HEADQUARTERS, DEPARTMENT OF THE ARMY**

**9 DECEMBER 1983**

**GENERAL SUPPORT MAINTENANCE  
 REPAIR PARTS AND SPECIAL TOOLS LIST  
 FOR  
 TEST SET, RADIO DATA LINK SOUND RANGING  
 TS-3566/GRA-1 14  
 (NSN 5895-01-064-9740)  
 Current as of 24 October 1983**

**REPORTING ERRORS AND RECOMMENDING IMPROVEMENTS**

You can help improve this manual. If you find any mistakes or if you know of a way to improve the procedures, please let us know. Mail your letter, DA Form 2028 (Recommended Changes to Publications and Blank Forms), or DA Form 202&2 located in back of this manual direct to: Commander, US Army Communications-Electronics Command and Fort Monmouth, ATTN: DRSEI&ME-MP, Fort Monmouth, NJ 07703. In either case, a reply will be furnished direct to you.

**Table of Contents**

		Page	Illus Figure
SECTION	I. Introduction .....	5	
GROUP	00 Test Set, Radio Data Link Sound Ranging TS-3566/GRA-114 .....	5	1
	01 Case, Test Set .....	7	2
	02 Panel Assembly .....	11	3
	0201 Circuit Card Assembly, Encode, General Test Set.....	15	4
	03 Amplifier Assembly .....	17	5
	0301 Circuit Card Assembly, Amplifier Assembly.....	19	6
SECTION	III. Special Tools List (Not applicable)		
	IV. National Stock Number and Part Number Index .....	20	

**SECTION I  
INTRODUCTION**

**1. Scope**

This manual lists spares and repair parts; special tools; special test, measurement, and diagnostic equipment (TMDE), and other special support equipment required for performance of general support maintenance of the TS-3566/GRA-114. It authorizes the requisitioning and issue of spares and repair parts as indicated by the source and maintenance codes.

**2. General**

This Repair Parts and Special Tools List is divided into the following sections:

*a. Section II. Repair Parts List.* A list of spares and repair parts authorized for use in the performance of maintenance. The list also includes parts which must be removed for replacement of the authorized parts. Parts lists are composed of functional groups in numeric sequence, with the parts in each group listed in figure and item number sequence.

*b. Section III. Special Tools List.* Not applicable.

*c. Section IV National Stock Number and Part Number Index.* A list, in National item identification number (NIIN) sequence, of all National stock numbers (NSN) appearing in the listings, followed by a list, in alphanumeric sequence, of all part numbers appearing in the listings. National stock numbers and part numbers are cross-referenced to each illustration figure and item number appearance.

**3. Explanation of Columns**

*a. Illustration.* This column is divided as follows:

(1) *Figure number.* Indicates the figure number of the illustration on which the item is shown.

(2) *Item number.* The number used to identify item called out in the illustration.

*b. Source, Maintenance, and Recoverability (SMR) Codes.*

(1) *Source code.* Source codes indicate the manner of acquiring support items for maintenance, repair, or overhaul of end items. Source codes are entered in the first and second positions of the Uniform SMR Code format as follows:

<i>Code</i>	<i>Definition</i>
PA -	Item procured and stocked for anticipated or known usage.
PG -	Item procured and stocked to provide for sustained support for the life of the equipment. It is applied to an item peculiar to the equipment

which, because of probable discontinuance or shutdown of production facilities, would prove uneconomical to reproduce at a later time.

XD - A support item that is not stocked. When required, item will be procured through normal supply channels.

**NOTE**

Cannibalization or salvage may be used as a source of supply for any items source coded above except those coded XA and aircraft support items as restricted by AR 750-1.

(2) *Maintenance code.* Maintenance codes are assigned to indicate the levels of maintenance authorized to USE and REPAIR support items. The maintenance codes are entered in the third and fourth positions of the Uniform SMR Code format as follows:

(a) The maintenance code entered in the third position will indicate the lowest maintenance level authorized to remove, replace, and use the support item. The maintenance code entered in the third position will indicate one of the following levels of maintenance:

<i>Code</i>	<i>Application/Explanation</i>
O -	Support item is removed, replaced, used at the organizational level.
H -	Support item is removed, replaced, used at the general support level.

(b) The maintenance code entered in the fourth position indicates whether the item is to be repaired and identifies the lowest maintenance level with the capability to perform complete repair (i.e., all authorized maintenance functions). This position will contain one of the following maintenance codes:

<i>Code</i>	<i>Application/Explanation</i>
H -	The lowest maintenance level capable of complete repair of the support item is the general support level.
Z -	Nonreparable. No repair is authorized.

(3) *Recoverability code.* Recoverability codes are assigned to support items to indicate the disposition action on unserviceable items. The recoverability code is entered in the fifth position of the Uniform SMR Code format as follows:

*Recoverability codes*

*Definition*

Z - Nonreparable item. When unserviceable, condemn and dispose at the level indicated in position 3.

H - Reparable item. When uneconomically reparable, condemn and dispose at the general support level.

c. *National Stock Number.* Indicates the National stock number assigned to the item and will be used for requisitioning purposes.

d. *Federal Supply Code for Manufacturer (FSCM).* The FSCM is a 5-digit numeric code listed in SB 708-41/42 which is used to identify the manufacturer, distributor, or Government agency, etc.

e. *Part Number.* Indicates the primary number used by the manufacturer (individual, company, firm, corporation, or Government activity), which controls the design and characteristics of the item by means of its engineering drawings, specifications, standards, and inspection requirements to identify an item or range of items.

**NOTE**

When a stock numbered item is requisitioned, the repair part received may have a different part number than the part being replaced.

f. *Description.* Indicates the Federal item name and, if required, a minimum description to identify the item.

g. *Unit of Measure (U/M).* Indicates the standard of the basic quantity of the listed item as used in performing the actual maintenance function. This measure is expressed by a two-character alphabetical abbreviation (e.g., ea, in, pr, etc). When the unit of measure differs from the unit of issue, the lowest unit of issue that will satisfy the required units of measure will be requisitioned.

h. *Quantity Incorporated in Unit.* Indicates the quantity of the item used in the breakout shown on the illustration figure, which is prepared for a functional group, subfunctional group, or an assembly.

**4. Special Information**

a. The following publications pertain to the TS-3566/GRA-114 and its components:

- TM 11-5895-1096-12, Test Set, Radio Data Link Sound Ranging
- TM 11-5895-1096-20P, Test Set, Radio Data Link Sound Ranging TS-3566/GRA-114 (To be published)
- TM 11-5895-1096-40, Test Set, Radio Data Link Sound Ranging TS-3566/GRA-114 (To be published)

b. National stock numbers (NSN's) that are missing from P source coded items have been applied for and will be added to this TM by future change/revision when they are entered in the Army Master Data File (AMDF). Until the NSN's are established and published, submit exception requisitions to: Commander, US Army Communications-Electronics Command and Fort Monmouth, ATTN: DRSEL-MM, Fort Monmouth, New Jersey 07703 for the part required to support your equipment.

**5. How to Locate Repair Parts**

a. When National stock number or part is unknown.

(1) *First.* Using the table of contents, determine the functional group within which the item belongs. This is necessary since illustrations are prepared for functional groups and listings are divided into the same groups.

(2) *Second,* Find the illustration covering the functional group to which the item belongs.

(3) *Third.* Identify the item on the illustration and note the illustration figure and item number of the item.

(4) *Fourth.* Using the Repair Parts Listing, find the figure and item number noted on the illustration.

b. When National stock number or part number is known.

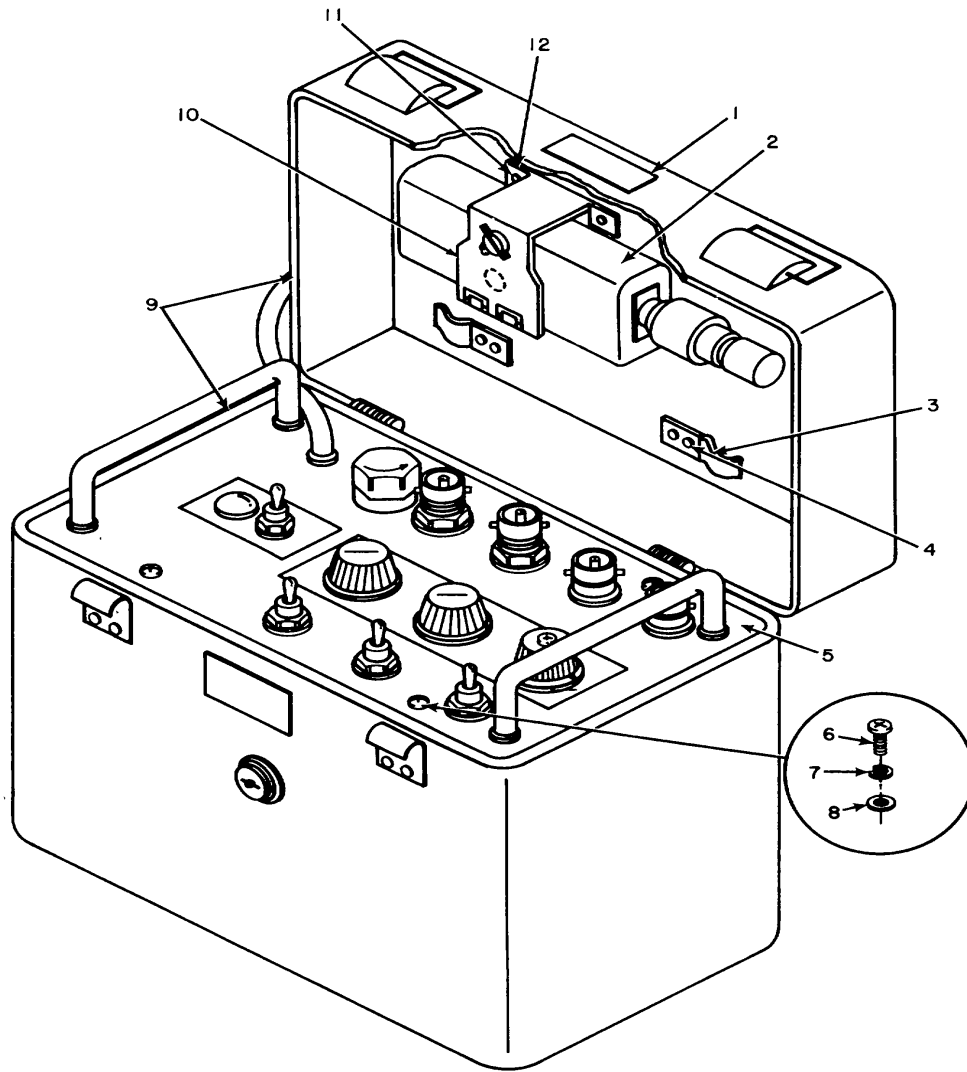
(1) *First.* Using the Index of National Stock Numbers and Part Numbers, find the pertinent National stock number or part number. This index is in NIIN sequence followed by a list of part numbers in alphanumeric sequence, cross-referenced to the illustration figure number and item number.

(2) *Second* After finding the figure and item number, locate the figure and item number in the repair parts list.

**6. Abbreviations**

Not applicable.

**(Next printed page is 4.1)**



EL6QY001

**TOP VIEW**

Figure 1. Test Set, Radio Data Link, Sound Ranging TS-3566/GRA-114 (Sheet 1 of 2).

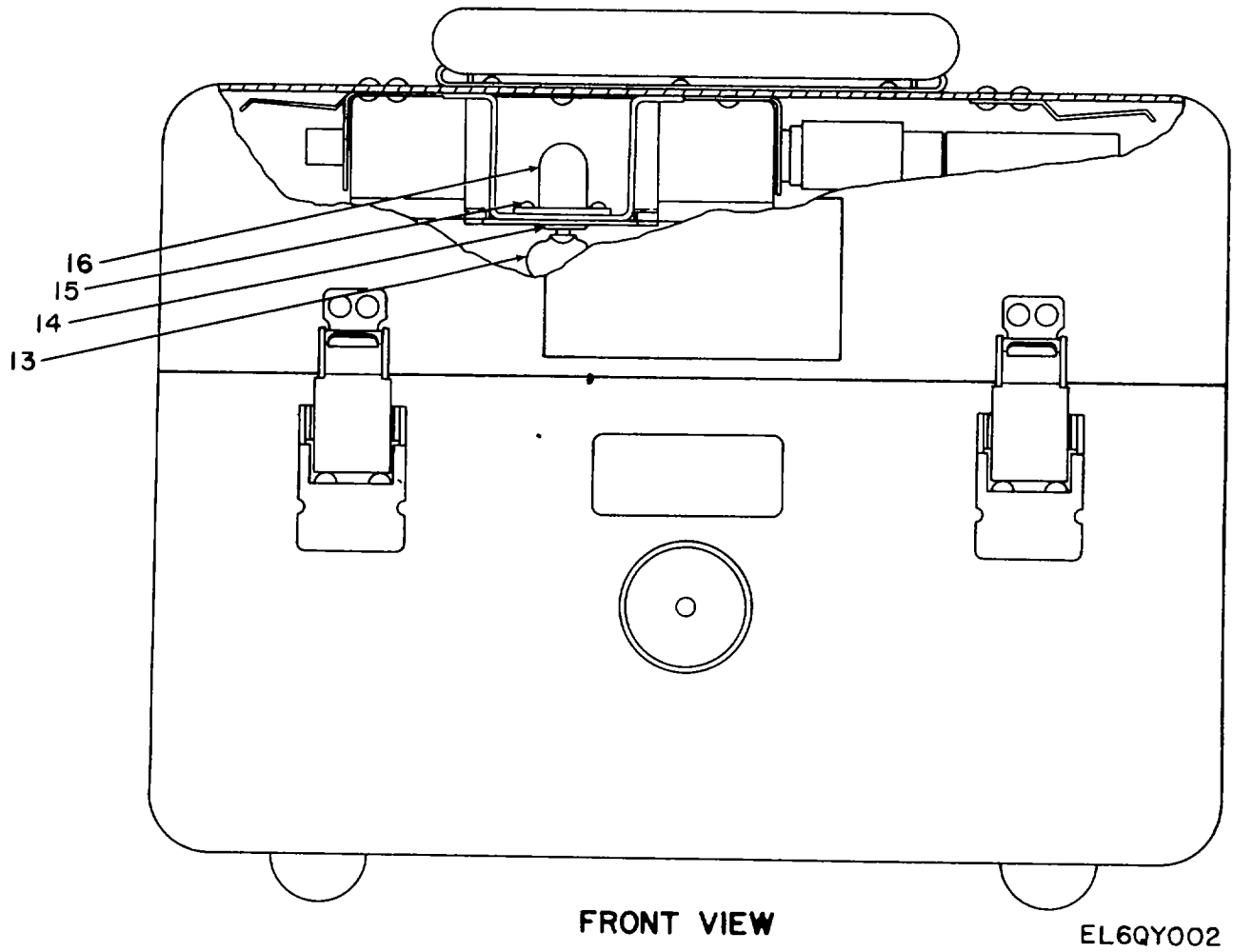
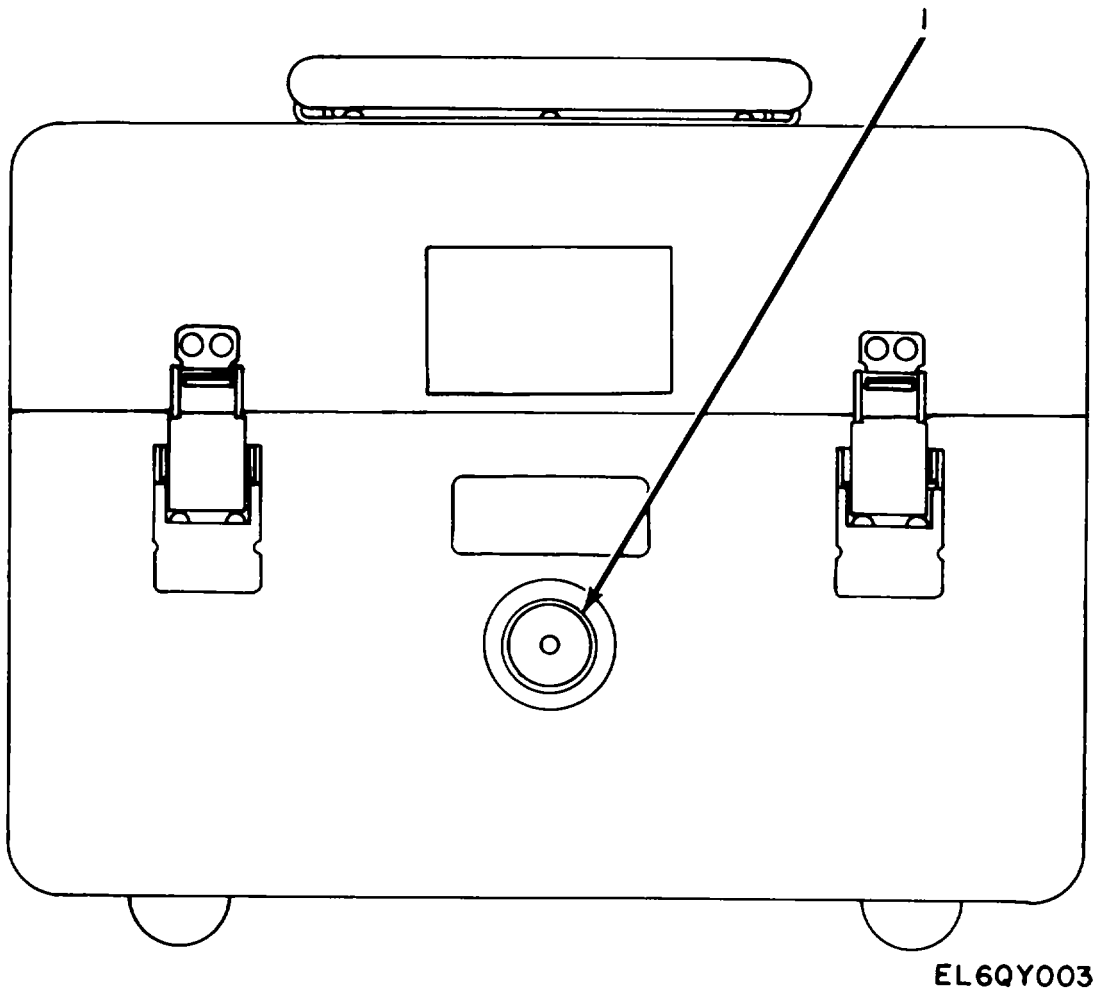


Figure 1. Test Set, Radio Data Link, Sound Ranging TS-3566/GRA-114 (Sheet 2 of 2).

SECTION II

TM 11-5895-1096-40P

(1) ILLUSTRATION		(2)	(3)	(4)	(5)	(6)	(7)	(8)
(a) FIG NO.	(b) ITEM NO.	SMR CODE	NATIONAL STOCK NUMBER	FSCM	PART NUMBER	DESCRIPTION  USABLE ON CODE	U/M	QTY INC IN UNIT
						GROUP 00 TEST SET,RADIO DATA LINK, TS-3566/GRA-114		
1	1	XBHZZ		80063	SM-C-977748	LABEL,IDENT .....	EA	1
1	2	PAHHH	5895-01-152-2948	80063	SM-D-703889	AMPLIFIER ASSEMBLY .....	EA	1
1	3	XBHZZ		80063	SM-B-703916	CLIP.CABLE .....	EA	2
1	4	PAHZZ	5320-00-879-6606	96906	MS16535-154	RIVET,TUBULAR .....	EA	4
1	5	XBHHH		80063	SM-D-703902	PANEL ASSEMBLY .....	EA	1
1	6	PAHZZ	5305-00-470-5475	96906	MS51958-63B	SCREW,MACHINE .....	EA	4
1	7	PAHZZ	5310-00-194-3649	96906	MS15795-808B	WASHER,FLAT .....	EA	4
1	8	PAHZZ	5310-00-224-0749	96906	MS35338-1388	WASHER.LDCK .....	EA	4
1	9	XBHHH		19178	D14130	CASE.TEST SET .....	EA	1
1	10	PAHZZ		60063	SM-C-703915	RETAINER ASSY, .....	EA	1
1	11	XDHZZ		96906	MS16535-339	RIVET,TUBULAR .....	EA	5
1	12	XBHZZ		80063	SM-B-703918	BRACKET,LATCH .....	EA	1
1	13	XBHZZ		71286	26S36-9	STUD,PANEL .....	EA	1
1	14	PAHZZ	5310-00-337-8329	71286	2600-LW	PUSH ON NUT .....	EA	1
1	15	PAHZZ	5320-00-234-1556	96906	MS20426A3-5	RIVET,SOLID .....	EA	2
1	16	PAHZZ	5325-00-584-6638	71286	26R16-1	RECEPTACLE,TURNLOCK .....	EA	1
					<b>5</b>			



EL6QY003

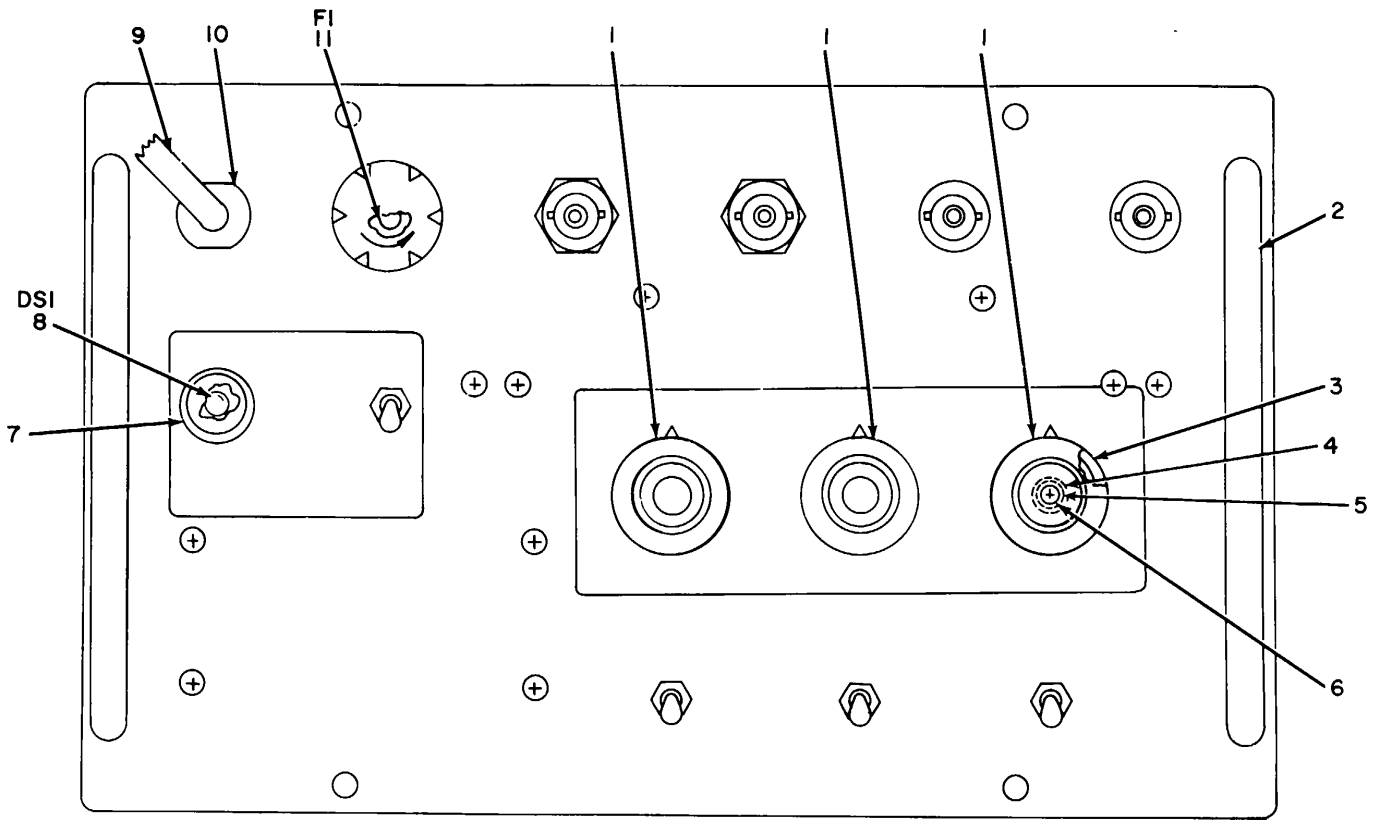
Figure 2. Case, Test Set.



SECTION II

TM 11-5895-1096-40P

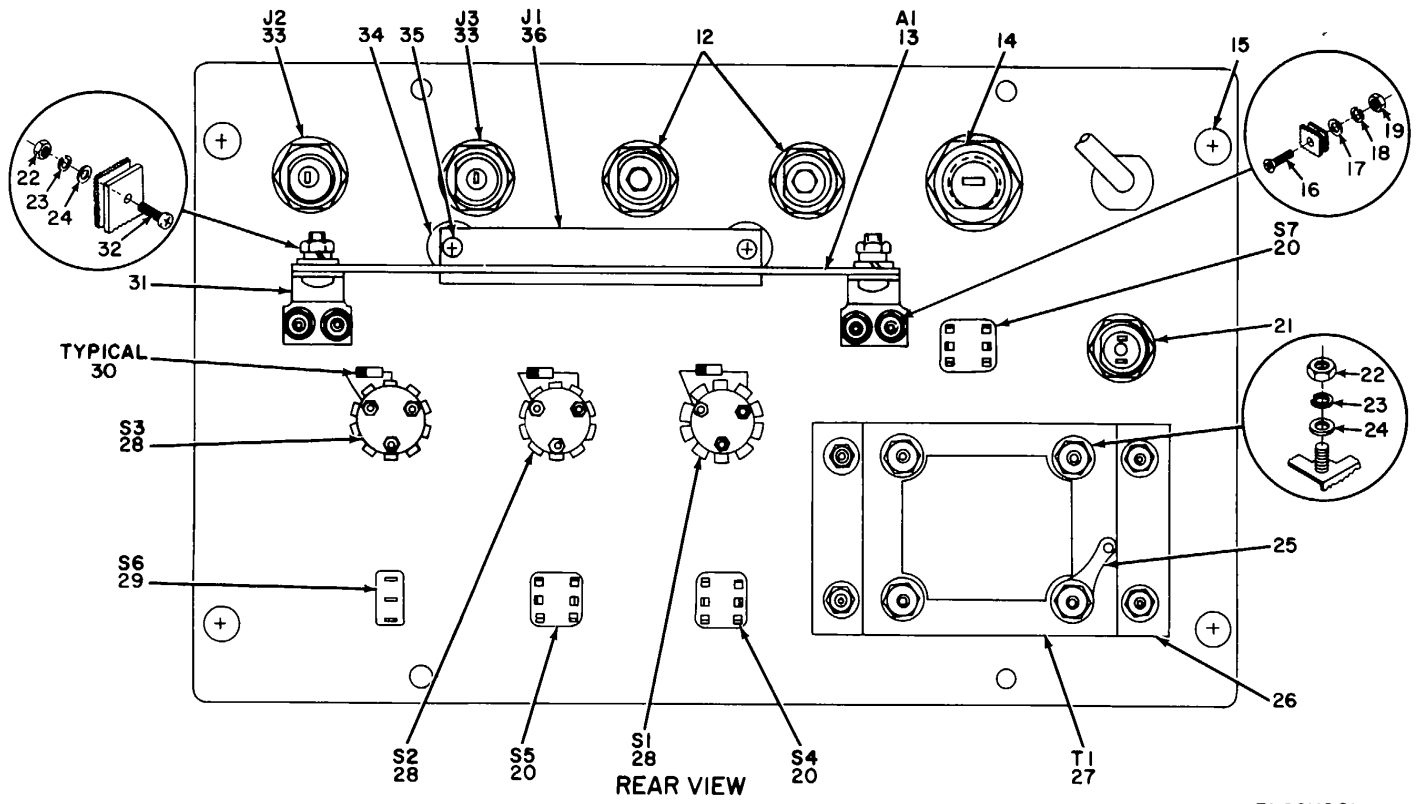
(1) ILLUSTRATION		(2)	(3)	(4)	(5)	(6)	(7)	(8)
(a) FIG NO.	(b) ITEM NO.	SMR CODE	NATIONAL STOCK NUMBER	FSCM	PART NUMBER	DESCRIPTION  USABLE ON CODE	U/M	QTY INC IN UNIT
2	1	PAHZZ	4820-00-98-3003	98376	ZSP6-037-4	GROUP 01 CASE,TEST SET VALVE,VACUUM BREAKI.....	EA	1
<b>7/(8 blank)</b>								



FRONT VIEW

EL6QY004

Figure 3. Panel Assembly (Sheet 1 of 2).



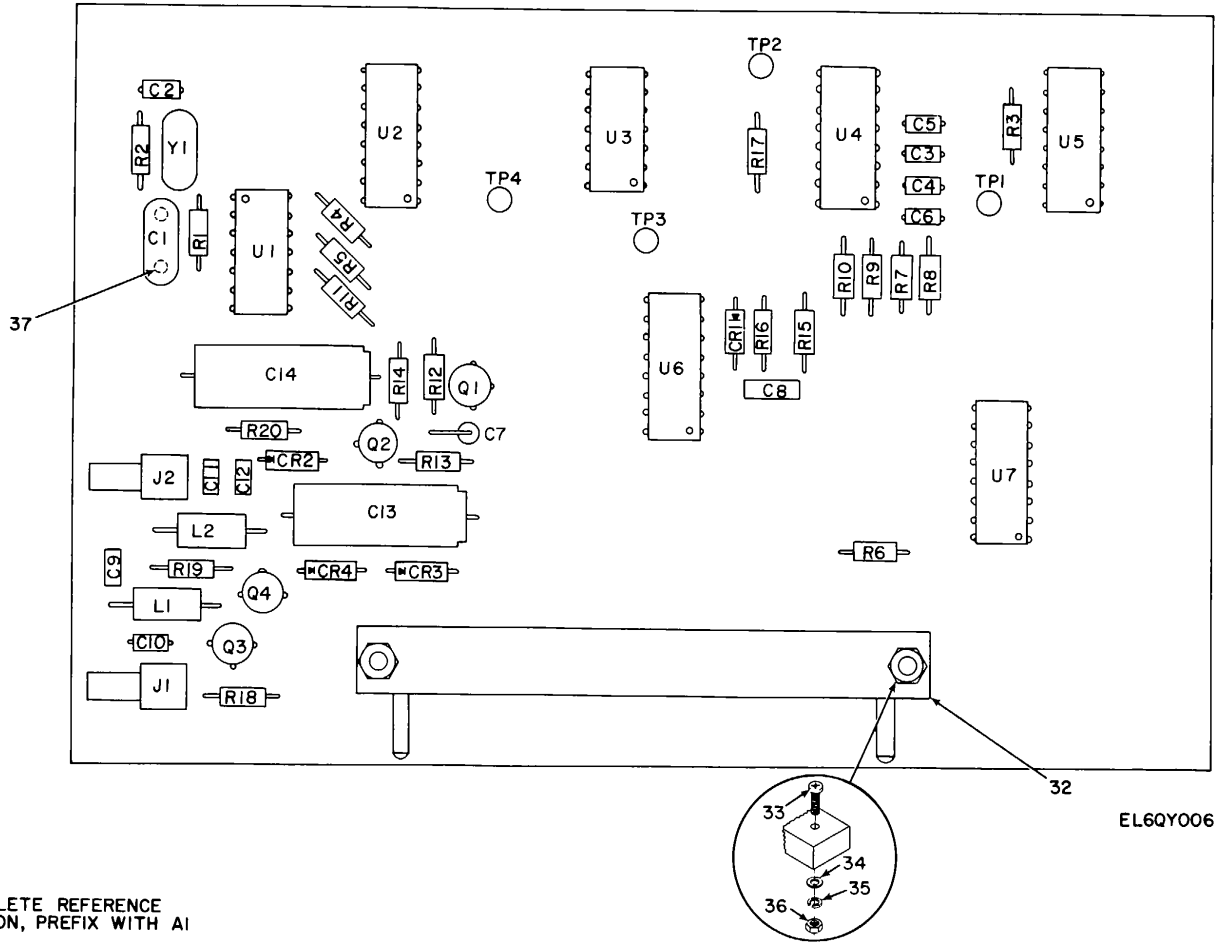
EL6QY005

Figure 3. Panel Assembly (Sheet 2 of 2).

SECTION II

TM 11-5895-1096-40P

(1) ILLUSTRATION		(2)	(3)	(4)	(5)	(6)	(7)	(8)	
(a) FIG NO.	(b) ITEM NO.	SMR CODE	NATIONAL STOCK NUMBER	FSCM	PART NUMBER	DESCRIPTION  USABLE ON CODE	U/M	QTY INC IN UNIT	
GROUP 02 PANEL ASSEMBLY									
3	1	PAOZZ	5355-01-133-5896	80063	SM-C-706541	KNOB .....	EA	3	
3	2	XBHXX			10334-0032-SS-10 32-6	HANDLE,BOW .....	EA	2	
3	3	PAHZZ		06540	80063	SM-C-706539	BUSHING.KNOB .....	EA	3
3	4	XBHZZ		80063	80063	SM-B-706540	SPRING,COIL.....	EA	3
3	5	PAOZZ		06540	8078-B-0632-6A	NUT,PLAIN,ROUND .....	EA	3	
3	6	PAHZZ	5305-00-448-6456	96906	MS51957-31B	SCREW,MACHINE .....	EA	3	
3	7	PAOZZ	6210-00-183-0513	81349	LC35YT2	LENS,LIGHT.....	EA	1	
3	8	PAOZZ	6240-00-965-1381	71744	CM-382	LAMP,INCADESCENT .....	EA	1	
3	9	PAHZZ	6150-00-419-4305	16428	17236	CABLE ASSEMBLY.POWE .....	EA	1	
3	10	PAHZZ	5975-00-351-6114	83330	939	BUSHING,STRAIN RELI .....	EA	1	
3	11	PAOZZ	5920-00-190-3348	51349	FM03A250V1-4A	FUSE,CARTRIDGE .....	EA	1	
3	12	PAHZZ		80063	SM-C-865328	CABLE ASSEMBLY.SPEC .....	EA	2	
3	13	PAHHH	5895-01-096-8788	80063	SM-D-865239	CIRCUIT CARD ASSEMBLY .....	EA	1	
3	14	PAHZZ	5920-00-952-9029	81349	FHN261	FUSEHOLDER,EXTRACTO .....	EA	1	
3	15	PAHZZ	5305-01-141-4086	96906	MS24693C270B	SCREW,MACHINE .....	EA	4	
3	16	PAHZZ	5305-00-448-6500	96906	MS51957-28B	SCREW,MACHINE .....	EA	2	
3	17	PAHZZ	5310-00-158-5259	96906	MS35649-2448	NUT,PLAIN,HEXAGON .....	EA	8	
3	18	PAHZZ	5930-00-947-8318	96906	MS75029-23	SWITCH,TOGGLE .....	EA	3	
3	19	PAHZZ	6210-00-176-4928	81349	LH89/1	LIGHT.INDICATOR.....	EA	1	
3	20	PAHZZ	5310-00-689-3772	96906	HS35649-264B	NUT,PLAIN,HEXAGON .....	EA	1	
3	21	PAHZZ	5310-00-929-6395	96906	KS35338-136	WASHER,LOCK .....	EA	6	
3	22	PAHZZ	5310-00-194-3648	96906	MS15795-B068	WASHER,FLAT .....	EA	6	
3	23	PAHZZ	5940-00-513-3264	96906	MS77070-2	TERMINAL,LUG .....	EA	1	
3	24	XBHZZ		80063	SM-C-703909	BRACKET,TRANSFORMER .....	EA	1	
3	25	PAHZZ	5950-00-078-7422	80223	H-935	TRANSFORMER,POWER .....	EA	1	
3	26	PAHZZ	5930-01-149-2998	81073	71BY231896	SWITCH,ROTARY.....	EA	3	
3	27	PAHZZ	5930-00-924,8088	96906	MS75028-31	SWITCH,TOGGLE .....	EA	1	
3	28	PAHZZ	5961-00-842-9864	81349	JAN1N914	SEMICONDUCTOR DEVIC .....	EA	12	
3	29	XBHZZ		80063	SM-B-703917	BRACKET .....	EA	2	
3	30	PAHZZ	5305-00-182-9459	96906	MS51957-17B	SCREW,MACHINE .....	EA	2	
3	31	PAHZZ	5310-00-224-0746	96906	MS35338-135B	WASHER,LOCK .....	EA	10	
3	32	PAHZZ	5310-00-687-6664	96906	MS15795-804B	WASHER,FLAT .....	EA	10	
3	33	PAHZZ	5930-00-997-8026	81349	M39012/24-0002	CONNECTOR,RECEPTAL .....	EA	2	
3	34	XDHZZ		06540	8393SS0440-7	STUD TERMINAL .....	EA	2	
3	31	PAHZZ	5305-00-455-2513	96906	MS51959-14B	SCREW.MACHINE .....	EA	10	
3	36	PAHZZ	5935-00-109-0137	81349	M21097/4-09	CONNECTOR,RECEPTACL.....	EA	1	
11/(12 blank)									



NOTE FOR COMPLETE REFERENCE  
DESIGNATION, PREFIX WITH AI

Figure 4. Circuit Card Assembly, Encode Gen Test Set (Sheet 1 of 2).

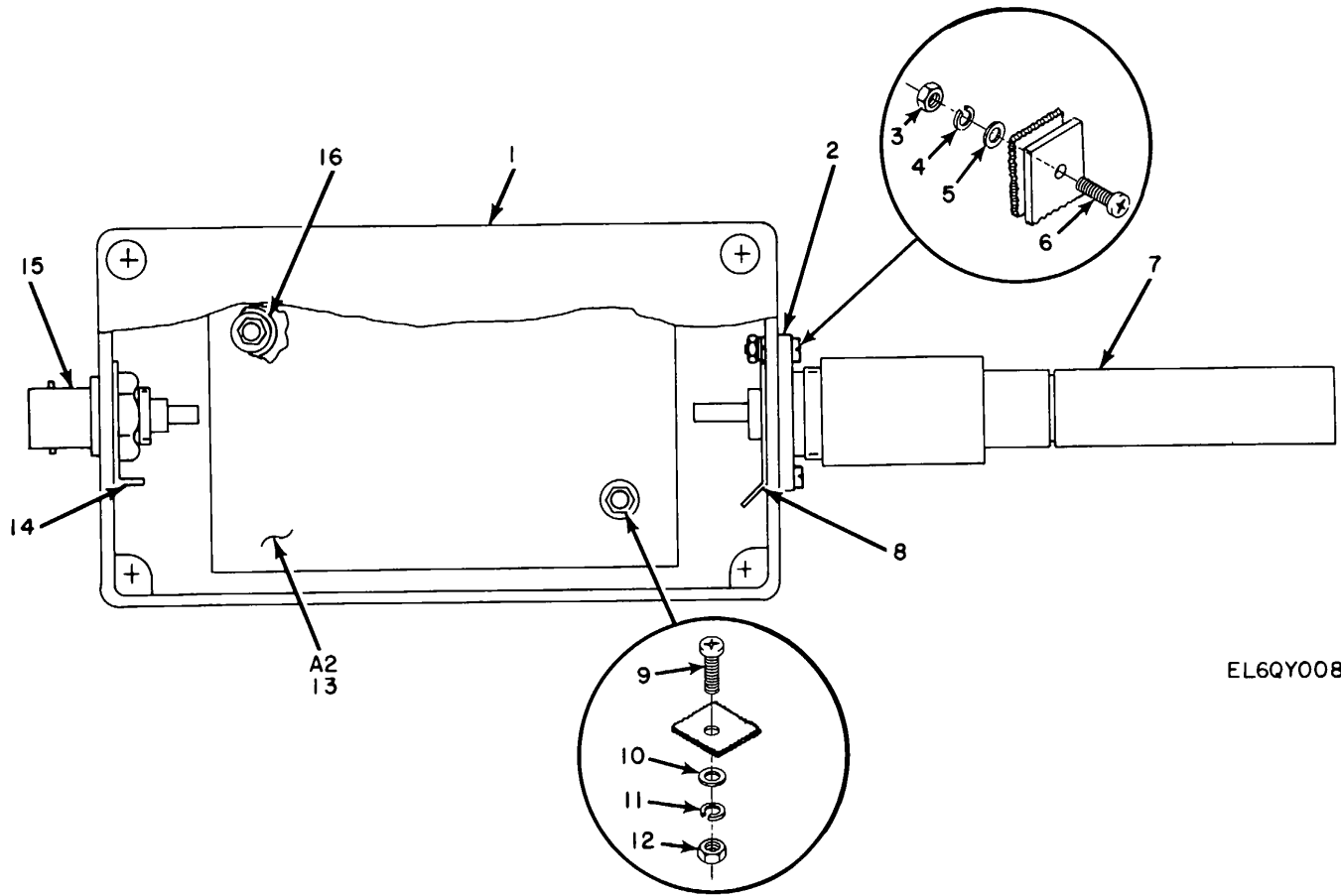
REF DES	ITEM NO	REF DES.	ITEM NO	REF DES.	ITEM NO
C1	1	L1	11	R15	19
C2	2	L2	11	R16	20
C3	3	Q1	12	R17	17
C4	3	Q2	12	R18	21
C5	3	Q3	12	R19	22
C6	3	Q4	12	R20	23
C7	4	R1	13	TP1	24
C8	5	R2	14	TP2	24
C9	6	R3	15	TP3	24
C10	6	R4	16	TP4	24
C11	6	R5	16	U1	25
C12	6	R6	16	U2	26
C13	7	R7	16	U3	27
C14	7	R8	16	U4	28
CR1	8	R9	16	U5	29
CR2	9	R10	16	U6	30
CR3	8	R11	17	U7	29
CR4	8	R12	16	Y1	31
J1	10	R13	15		
J2	10	R14	18		

NOTE: FOR COMPLETE REFERENCE  
DESIGNATION, PREFIX WITH A1

EL6QY007

Figure 4. Circuit Card Assembly, Encode Gen Test Set (Sheet 2 of 2)

(1) ILLUSTRATION		(2)	(3)	(4)	(5)	(6)	(7)	(8)
(a) FIG NO.	(b) ITEM NO.	SMR CODE	NATIONAL STOCK NUMBER	FSCM	PART NUMBER	DESCRIPTION  USABLE ON CODE	U/M	QTY INC IN UNIT
						GROUP 0201 CIRCUIT CARD ASSEMBLY, ENCODE, GEN TEST SET		
4	1	PAHZZ	5910-01-028-9218	81349	CMR03E22000CR	CAPACITOR, FIXED, MIC .....	EA	1
4	2	PAHZZ	5910-00-113-5445	81349	M39014/01-1339	CAPACITOR, FIXED, CER .....	EA	1
4	3	PAHZZ	5910-00-113-5276	81349	MS9014/01-1351	CAPACITOR, FIXED, CER .....	EA	4
4	4	PAHZZ	5910-00-236-8740	81349	M39003-01-2974	CAPACITOR, FIXED, ELE .....	EA	1
4	5	PAHZZ	5910-00-600-6889	81349	M39014/02-1230	CAPACITOR, FIXED, CER .....	EA	1
4	6	PAHZZ	5910-01-028-7835	81349	M39014-01-1237	CAPACITOR, FIXED, CER .....	EA	4
4	7	PAHZZ	5910-00-236-8745	81349	M39003/01-3021	CAPACITOR, FIXED, ELE .....	EA	2
4	8	PAHZZ	5961-00-842-9864	81349	JAN1N914	SEMICONDUCTOR DEVIC .....	EA	3
4	9	PAHZZ	5961-00-752-6115	81349	JAN1N964B	SEMICONDUCTOR DEVIC .....	EA	1
4	10	PAHZZ	5935-01-159-2438	19505	110	CONNECTOR, PLUG, ELEC .....	EA	2
4	11	PAHZZ	5950-01-011-1225	96906	MS75088-9	COIL, RADIO FREOUENC .....	EA	2
4	12	PAHZZ	5961-00-996-1894	81349	JANTXZN2222	TRANSISTOR .....	EA	4
4	13	PAHZZ	5905-00-126-6694	81349	RCR07G475JS	RESISTOR, FIXED, COMP .....	EA	1
4	14	PAHLZ	5905-00-116-8555	81349	RCR07G153JS	RESISTOR, FIXED, COMP .....	EA	1
4	15	PAHZZ	5905-00-141-0717	81349	RCR07G473JS	RESISTOR, FIXED, COMP .....	EA	2
4	16	PAHZZ	5905-00-110-7620	81349	RCR07G102JS	RESISTOR, FIXED, COMP .....	EA	8
4	17	PAHZZ	5905-00-116-8556	81349	RCR07G223JS	RESISTOR, FIXED, COMP .....	EA	2
4	18	PAHZZ	5905-00-114-0711	81349	RCR07G412JS	RESISTOR, FIXED, COMP .....	EA	1
4	19	PAHZZ	5905-00-110-0388	81349	RCR07G104JS	RESISTOR, FIXED, COMP .....	EA	1
4	20	PAHZZ	5905-00-106-3666	81349	RCR07G103JS	RESISTOR, FIXED, COMP .....	EA	1
4	21	PAHZZ	5905-00-135-6045	81349	RCR07G330JS	RESISTOR, FIXED, COMP .....	EA	1
4	22	PAHZZ	5905-00-131-1255	81349	RCR07G122JS	RESISTOR, FIXED, COMP .....	EA	1
4	23	PAHZZ	5905-00-141-0742	81349	RCR07G181JS	RESISTOR, FIXED, COMP .....	EA	1
4	24	PAHZZ	5940-00-082-5002	81349	SE16XC01	TERMINAL, STUD .....	EA	4
4	25	PGHZZ	5962-01-034-9829	81349	M38510/05303 BCB	MICROCIRCUIT, DIGITA .....	EA	1
4	26	PAHZZ	5962-01-094-3127	54590	CD4040AF/3	MICROCIRCUIT, DIGITA .....	EA	1
4	27	PGHZZ	5962-01-014-8081	81349	M38510/05101 BCB	MICROCIRCUIT, DIGITA .....	EA	1
4	28	PAHZZ	5962-01-127-2672	02735	CD4052BF/3	MICROCIRCUIT, DIGITA .....	EA	1
4	29	XDHZZ	5962-01-015-3896	81349	M38510/05102 BEA	CIRCUIT CARD ASSEMB .....	EA	2
4	30	PGHZZ	5962-01-089-7355	81349	138510/05601 BEB	MICROCIRCUIT, DIGITA .....	EA	1
4	31	PAHZZ		18853	C-706933	CRYSTAL UNIT, QUARTZ .....	EA	1
4	32	PAHZZ	5935-00-109-0147	81349	M21097/5-03	CONNECTOR, RECEPTACL .....	EA	1
4	33	PAHZZ	5305-00-177-5545	96906	MS51957-120	SCREW, MACHINE .....	EA	2
4	34	PAHZZ	5310-00-224-0764	96906	MS35338-1358	WASHER, LOCK .....	EA	2
4	35	PAHZZ	5310-00-687-6664	96906	MS515795-8048	WASHER, FLAT .....	EA	2
4	36	PAHZZ	5310-00-158-5259	96906	MS35649-2448	NUT, PLAIN, HEXAGON .....	EA	2
4	37	XBHZZ		80063	SM-8-984549	BEAD, GLASS .....	EA	22



EL6QY008

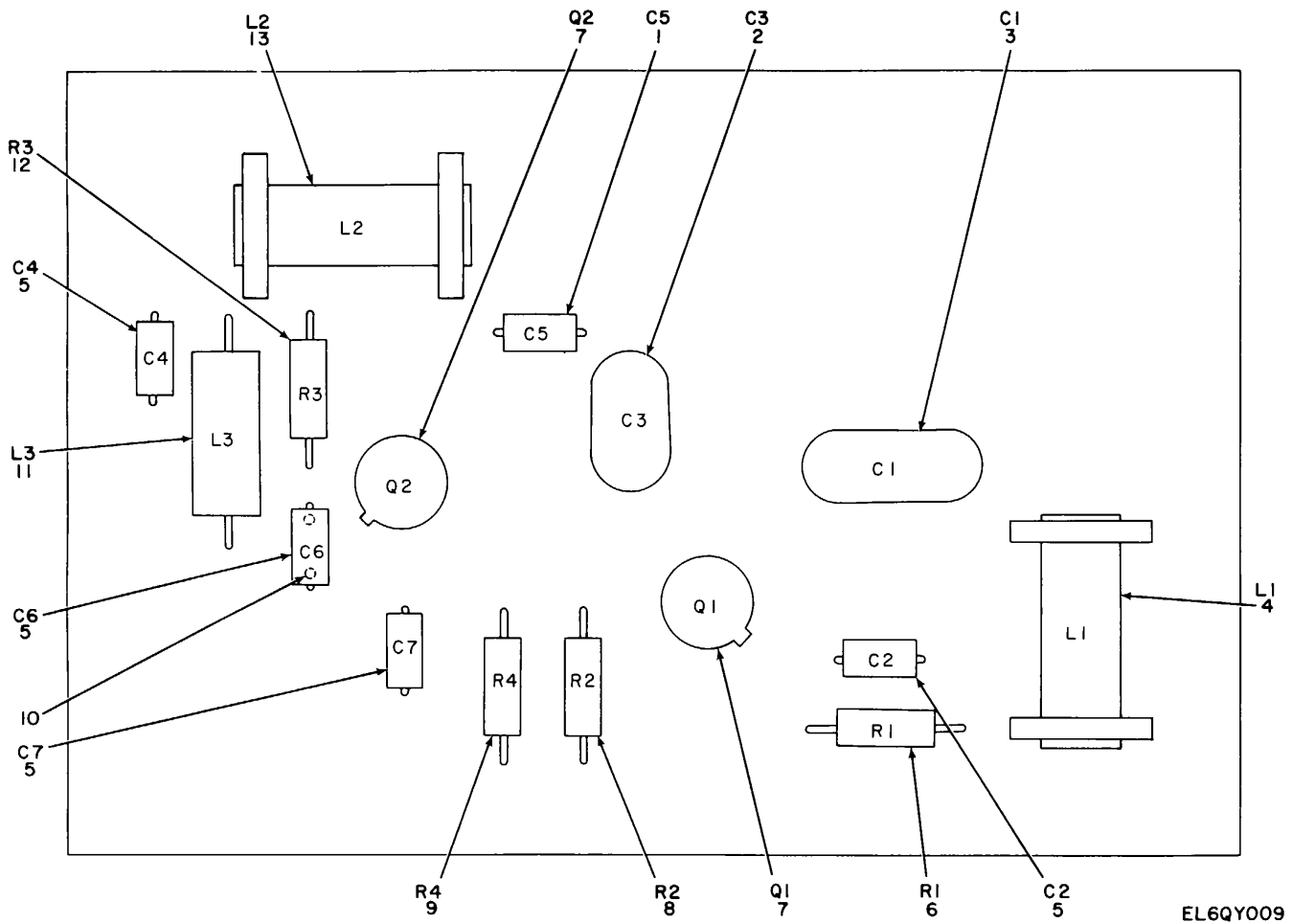
Figure 5. Amplifier Assembly.



SECTION II

TM 11-5895-1096-40P

(1) ILLUSTRATION		(2)	(3)	(4)	(5)	(6)	(7)	(8)
(a) FIG NO.	(b) ITEM NO.	SMR CODE	NATIONAL STOCK NUMBER	FSCM	PART NUMBER	DESCRIPTION  USABLE ON CODE	U/M	QTY INC IN UNIT
						GROUP 03 AMPLIFIER ASSEMBLY		
5	1	XBHZZ		71218	SM-C-703946	CASE,AMPLIFIER .....	EA	1
5	2	PAHZZ	5935-00-820-1147	02660	83-1R	CONNECTOR,CRECEPTACL.....	EA	1
5	3	PAHZZ	5305-00-054-5648	96906	MS51957-14	SCREW,MACHINE .....	EA	4
5	4	PAHZZ	5310-00-224-0746	96906	MS35338-135B	WASHER,LOCK .....	EA	3
5	5	PAHZZ	5310-00-208-3786	80205	NAS671C4	NUT,PLAIN,HEXAGON .....	EA	4
5	6	PAHZZ	5310-00-616-3648	80205	NAS620-4L	WASHER,FLAT .....	EA	1
5	7	PAHZZ	6625-01-130-9406	80063	SM-C-865157	PROD,TEST .....	EA	1
5	8	PAHZZ	5940-00-513-3264	96906	MS77070-2	TERMINAL,LUG .....	EA	1
5	9	PAHZZ	5305-00-150-3426	96906	MS51957-33B	SCREW,MACHINE .....	EA	2
5	10	PAHZZ	5310-00-409-1763	96906	MS15795-805B	WASHER,FLAT .....	EA	2
5	11	PAHZZ	5310-00-689-3772	96906	MS35649-264B	NUT,PLAIN,HEXAGON .....	EA	2
5	12	PAHZZ	5310-00-224-0747	96906	MS35338-136B	WASHER,LOCK .....	EA	2
5	13	PAHHH		80063	SM-D-703947	CIRCUIT CARD ASSEMB .....	EA	1
5	14	XDHZZ		78189	2440-20-03	TERMINAL,LUG .....	EA	1
5	15	PAHZZ	5935-00-997-8026	81349	M39012/24-0002	CONNECTOR,RECEPTACL.....	EA	1
5	16	PAHZZ		06540	9320-A-171-16	SPACER,SLEEVE .....	EA	2
<b>17</b>								



NOTE: FOR COMPLETE REFERENCE  
DESIGNATION, PREFIX WITH A2

Figure 6. Circuit Card Assembly, Ampl Assy

SECTION II

TM 11-5895-1096-40P

(1) ILLUSTRATION		(2)	(3)	(4)	(5)	(6)	(7)	(8)
(a) FIG NO.	(b) ITEM NO.	SMR CODE	NATIONAL STOCK NUMBER	FSCM	PART NUMBER	DESCRIPTION  USABLE ON CODE	U/M	QTY INC IN UNIT
						GROUP 0301 CIRCUIT CARD ASSEMBLY, AMPLIFIER ASSEMBLY		
6	1	PAHZZ	5910-01-028-7835	81349	MS39014-01-1237	CAPACITOR, FIXED, CER .....	EA	1
6	2	PAHZZ	5910-00-308-7095	81349	CMR04220J0DR	CAPACITOR, FIXED, MIC .....	EA	1
6	3	PAHZZ	5910-01-041-6291	81349	CMR04F101G0DR	..... CAPACITOR, FIXED, MIC		EA
1								
6	4	PAHZZ		80063	SM-C-977747-1	COIL, ADJUSTABLE .....	EA	1
6	5	PAHZZ	5910-00-124-0659	81349	M39014-01-1575	CAPACITOR, FIXED, CER .....	EA	4
6	6	PAHZZ	5905-00-135-3973	81349	RCR07G221JS	RESISTOR, FIXED, COMP .....	EA	1
6	7	PAHZZ		17856	SM-C-706780	TRANSISTOR .....	EA	2
6	8	PAHZZ	5905-00-106-3666	81349	RCR07G103JS	RESISTOR, FIXED, COMP .....	EA	1
6	9	PAHZZ	5905-00-119-8768	81349	RCR07G821JS	RESISTOR, FIXED, COMP .....	EA	1
6	10	PAHZZ		80063	SM-B-984549	BEAD, GLASS .....	EA	14
6	11	PAHZZ	5950-01-011-1225	96906	MS75088-9	COIL, RADIO FREQUENC .....	EA	1
6	12	PAHZZ	5905-00-110-7620	81349	RCR07G102JS	RESISTOR, FIXED, COMP .....	EA	1
6	13	PAHZZ		80063	SM-C-977747-2	COIL, ADJUSTABLE .....	EA	1
<b>19</b>								

## NATIONAL STOCK NUMBER AND PART NUMBER INDEX

STOCK NUMBER	FIGURE NO.	ITEM NO.	STOCK NUMBER	FIGURE NO.	ITEM NO.
5305-00-054-5648	5	3	5305-00-448-6456	3	6
5950-00-078-7422	3	25	5305-00-448-6500	3	16
5940-00-082-5002	4	24	5305-00-455-2513	3	35
5905-00-106-3666	4	20	5305-00-470-5475	1	6
5905-00-106-3666	6	8	5940-00-513-3264	3	23
5935-00-109-0137	3	36	5940-00-513-3264	5	8
5935-00-109-0147	4	32	5325-00-584-6638	1	16
5905-00-110-0388	4	19	5910-00-600-6889	4	5
5905-00-110-7620	4	16	5310-00-616-3648	5	6
5905-00-110-7620	6	12	5310-00-687-6664	3	32
5910-00-113-5276	4	3	5310-00-687-6664	4	35
5910-00-113-5445	4	2	5310-00-689-3772	3	20
5905-00-114-0711	4	18	5310-00-689-3772	5	11
5905-00-116-8555	4	14	5961-00-752-6115	4	9
5905-00-116-8556	4	17	5935-00-820-1147	5	2
5905-00-119-8768	6	9	5961-00-842-9864	3	28
5910-00-124-0659	6	5	5961-00-842-9864	4	8
5905-00-126-6694	4	13	5320-00-879-6606	1	4
5905-00-131-1255	4	22	4820-00-898-3003	2	1
5905-00-135-3973	6	6	5930-00-924-8088	3	27
5905-00-135-6045	4	21	5310-00-929-6395	3	21
5905-00-141-0717	4	15	5930-00-947-8318	3	18
5905-00-141-0742	4	23	5920-00-952-9029	3	14
5305-00-150-3426	5	9	6240-00-965-1381	3	8
5310-00-158-5259	3	17	5961-00-996-1894	4	12
5310-00-158-5259	4	36	5935-00-997-8026	3	33
6210-00-176-4928	3	19	5935-00-997-8026	5	15
5305-00-177-5545	4	33	5950-01-011-1225	4	11
5305-00-182-9459	3	30	5950-01-011-1225	6	11
6210-00-183-0513	3	7	5962-01-014-8081	4	27
5920-00-190-3348	3	11	5962-01-015-3896	4	29
5310-00-194-3648	3	22	5910-01-028-7835	4	6
5310-00-194-3649	1	7	5910-01-028-7835	6	1
5310-00-208-3786	5	5	5910-01-028-9218	4	1
5310-00-224-0746	3	31	5962-01-034-9829	4	25
5310-00-224-0746	4	34	5910-01-041-6291	6	3
5310-00-224-0746	5	4	5962-01-089-7355	4	30
5310-00-224-0747	5	12	5962-01-094-3127	4	26
5310-00-224-0749	1	8	5895-01-096-8788	3	13
5320-00-234-1556	1	15	5962-01-127-2672	4	28
5910-00-236-8740	4	4	6625-01-130-9406	5	7
5910-00-236-8745	4	7	5355-01-133-5896	3	1
5910-00-308-7095	6	2	5305-01-141-4086	3	15
5310-00-337-8329	1	14	5930-01-149-2998	3	26
5975-00-351-6114	3	10	5895-01-152-2948	1	2
5310-00-409-1763	5	10	5935-01-159-2438	4	10
6150-00-419-4305	3	9			

FSCM	PART NUMBER	FIGURE NO.	ITEM NO.	FSCM	PART NUMBER	FIGURE NO.	ITEM NO.
18853	C-706933	4	31	96906	MS35338-135B	5	4
54590	CD4040AF/3	4	26	96906	MS35338-136	3	21
02735	CD40528F/3	4	28	96906	M535338-136B	5	12
71744	CM-382	3	8	96906	MS35338-138B	1	8
81349	CMR03E220DOCR	4	1	96906	MS35649-244B	3	17
81349	CMR04F101GODR	6	3	96906	MS35649-244B	4	36
81349	CMR04220JODR	6	2	96906	MS35649-264B	3	20
19178	014130	1	9	96906	MS35649-264B	5	11
81349	FHN26W	3	14	96906	NS51957-120	4	33
81349	FM03A250V1-4A	3	11	96906	MS51957-14	5	3
80223	H-935	3	25	96906	MS51957-17B	3	30
81349	JANTX2N2222	4	12	96906	MS51957-28B	3	16
81349	JAN1N914	3	28	96906	MS51957-31B	3	6
81349	JAN1N914	4	8	96906	MS51957-33B	5	9
81349	JAN1N964B	4	9	96906	MS5195B-63B	1	6
81349	LC35YT2	3	7	96906	MS51959-14B	3	35
81349	LH89/1	3	19	96906	MS75028-31	3	27
96906	MS15795-804B	3	32	96906	MS75029-23	3	18
96906	MS15795-804B	4	35	96906	MS75088-9	4	11
96906	MS15795-805B	5	10	96906	MS75088-9	6	11
96906	MS15795-806B	3	22	96906	MS77070-2	3	23
96906	MS15795-808B	1	7	96906	MS77070-2	5	8
96906	MS16535-154	1	4	81349	MS9014/01-1351	4	3
96906	MS16535-339	1	11	81349	M21097/4-09	3	36
96906	MS20426A3-5	1	15	81349	M21097/5-03	4	32
96906	MS24693C270B	3	15	81349	M38510/05101BCB	4	27
96906	MS35338-135B	3	31	81349	M38510/05102BEA	4	29
96906	NS35338-135B	4	34	81349	M38510/05303BCB	4	25

## SECTION IV

## NATIONAL STOCK NUMBER AND PART NUMBER INDEX

TM 11-5895-1096-40P

FSCM	PART NUMBER	FIGURE NO.	ITEM NO.	FSCM	PART NUMBER	FIGURE NO.	ITEM NO.
81349	M38510/05601BEB	4	30	80063	SM-B-984549	4	37
81349	M39003-01-2974	4	4	80063	SM-B-984549	6	10
81349	M39003/01-3021	4	1	80063	SM-C-703909	3	24
81349	M39012/24-0002	3	33	80063	SM-C-703915	1	10
81349	M39012/24-0002	5	15	71218	SM-C-703946	5	1
81349	M39014-01-1237	4	6	80063	SM-C-706539	3	3
81349	M39014-01-1237	6	1	80063	SM-C-706541	3	1
81349	M39014-01-1575	6	5	17856	SM-C-106780	6	7
81349	M39014/01-1339	4	2	80063	SM-C-865157	5	7
81349	M39014/02-1230	4	5	80063	SM-C-865328	3	12
80205	NAS620-4L	5	6	80063	SM-C-977741-1	6	4
80205	NAS671C4	5	5	80063	SM-C-977147-2	6	13
81349	RCR07G102JS	4	16	80063	SM-C-917748	1	1
81349	RCR07G102JS	6	12	80063	SM-D-703889	1	Z
81349	RCR07G103JS	4	20	80063	SM-D-703902	1	5
81349	RCR07G103JS	6	8	80063	SM-D-103947	5	13
81349	RCR07G104JS	4	19	80063	SM-D-865239	3	13
81349	RCR07G122JS	4	22	98376	ZSP6-037-4	2	1
81349	RCR07G153JS	4	14	06540	10334-0032-55-1032-6	3	Z
81349	RCR07G181JS	4	23	19505	110	4	10
81349	RCR07G221JS	6	6	16428	17236	3	9
81349	RCR07G223JS	4	17	78189	2440-20-03	5	14
81349	RCR07G330JS	4	21	71286	26R16-1	1	1
81349	RCR07G472JS	4	18	71286	26536-9	1	13
81349	RCR07G473JS	4	15	71286	2600-LW	1	14
81349	RCR07G475JS	4	13	81073	71BY231898	J	Z6
81349	RCR07G821JS	6	9	06540	8078-B-0632-6A	J	5
81349	SE16XC01	4	24	02660	83-1R	5	2
80063	SM-B-703916	1	3	06540	8393SS0440-7	3	34
80063	SM-B-703917	3	29	06540	9320-A-171-16	5	16
80063	SM-B-703918	1	12	83330	939	3	10
80063	SM-B-706540	3	4				

21/(22 blank)

By Order of the Secretary of the Army:

Official:

JOHN A. WICKHAM JR.  
*General, United States Army*  
*Chief of Staff*

ROBERT M. JOYCE  
*Major General, United States Army*  
*The Adjutant General*

Distribution:

To be distributed In accordance with special list.



